



Silesian
University
of Technology

10th INTERNATIONAL CONFERENCE ON SUSTAINABLE SOLID WASTE MANAGEMENT

21 - 24 June 2023, Chania, Crete, Greece

Towards sustainable community – the evaluation of the local municipal waste collection centers by residents – a case study of Poland

Piotr Nowakowski ¹, Mariusz WALA ²

¹ Faculty of Transport, Silesian University of Technology, Katowice, Poland

² PST Transgór S.A. Rybnik, Poland




Silesian University
of Technology

Piotr Nowakowski


Scope and goal of this study



- Direct survey at municipal waste collection centers
- To identify sources of information about separated waste collection
- To explore methods of disseminating information about waste collection – key communication channels
- To identify attitude and awareness of environmental protection by recovery of secondary raw materials by individuals



But, why local collection centers are so important?



It is an obligation in the EU policy
And you can bring in almost any waste
to the center



It is also a challenge for researchers!
It combines environmental policy,
social attitude, education, promotion
and communication issues

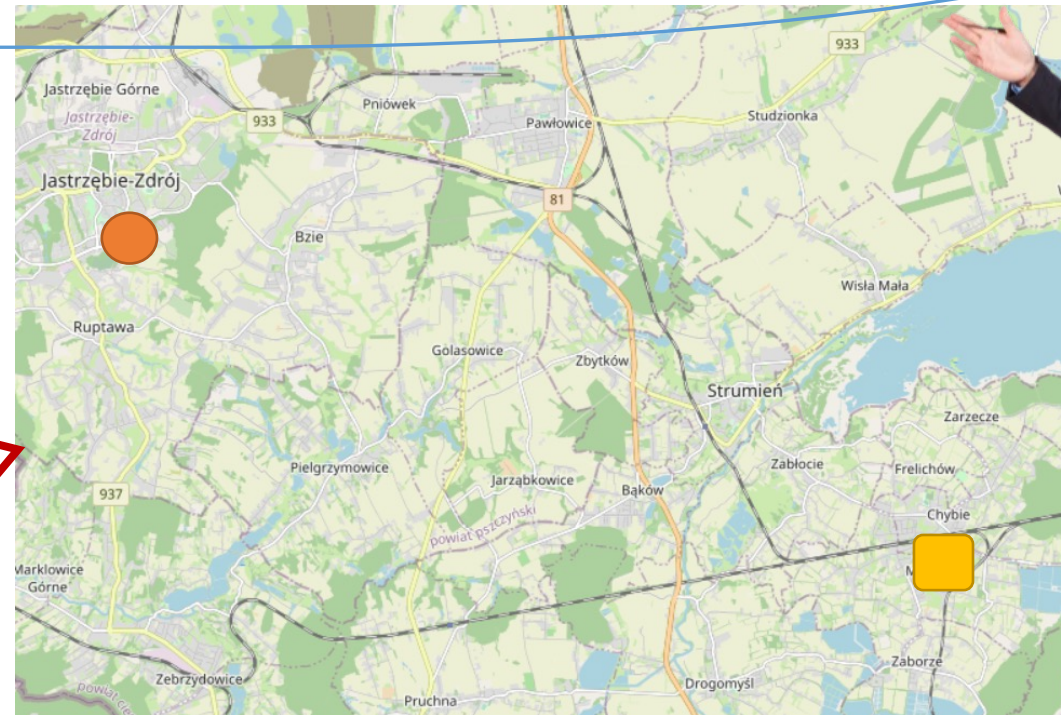
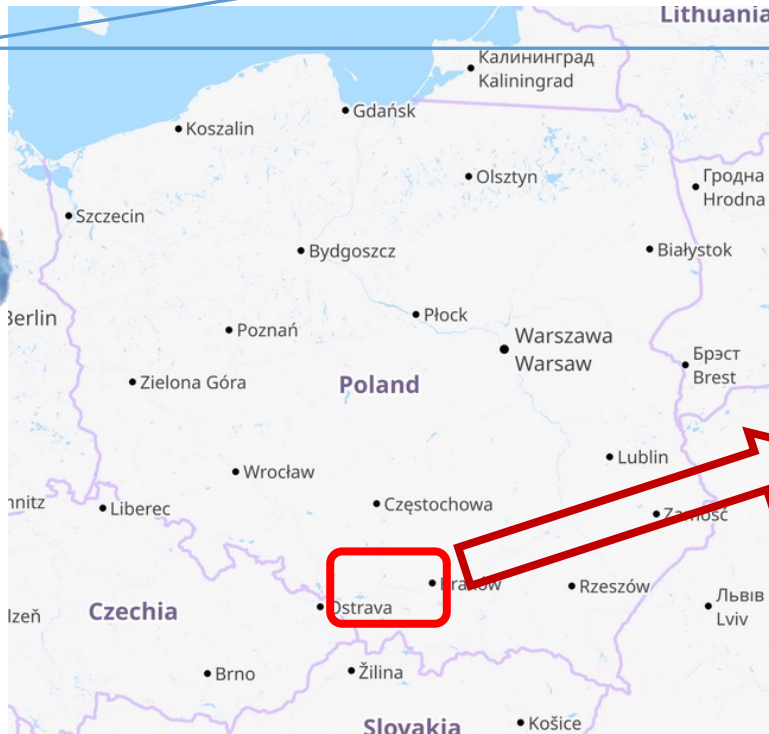


Target group



- Target group are the residents disposing of the waste in the municipal/communal waste collection centers,
- The group of individuals is directly involved in the waste collection/transportation process to guarantee the reliability of the results,
- The data collection is not easy due to low willingness of individuals to participate in the questionnaires.

Location of the waste collection centers – South of Poland



- Jastrzębie – Zdrój – Municipal Collection Center (MCC)
- Chybie – Rural Collection Center (RCC)

View of the waste collection centers

Jastrzębie – Zdrój
MCC



Chybie
RCC



Survey – questionnaire details

- Questionnaire in paper form
- Profile of individuals (general data)
- Sources of information about waste collection and collection centers
- Opinions and attitude towards environment and waste collection
- Sources of education in the above mentioned subjects
- Proposals for improvement of the operation of the waste collection centers



ANKIETA ANONIMOWA! PROJEKT BADAWCZY!
Ankieta służy do zbierania informacji o funkcjonowaniu PSZOK w zakresie przetwarzania odpadów
oraz do zbierania informacji o opinii respondentów na temat PSZOK.

Proszę o wypełnienie ankiety w sposób szczery i bezstronny. Wyniki ankiety zostaną wykorzystane do celów badawczych.

1. Wiek:
☐ Wiek 18 - 24
☐ Wiek 25 - 34
☐ Wiek 35 - 44
☐ Wiek 45 - 54
☐ Wiek 55 - 64
☐ Wiek 65 i powyżej

2. Płeć:
☐ Kobieta
☐ Mężczyzna

3. Wykształcenie:
☐ Podstawowe
☐ Zawodowe
☐ Średnie
☐ Wyższe

4. Zanimowanie:
a) Główna wiedza
☐ Główna wiedza
b) Wychowanie gospodarskie domowego - liczba osób tworzących gospodarstwo?
☐ 1 osobę
☐ 2 osobę
☐ 3 osobę
☐ 4 osobę
☐ 5 osobę i więcej

6. Skala dochodów gospodarstwa domowego na osobę:
☐ Poniżej 2000 zł/osobę
☐ Około 2000 zł/osobę
☐ Powyżej 2000 zł/osobę

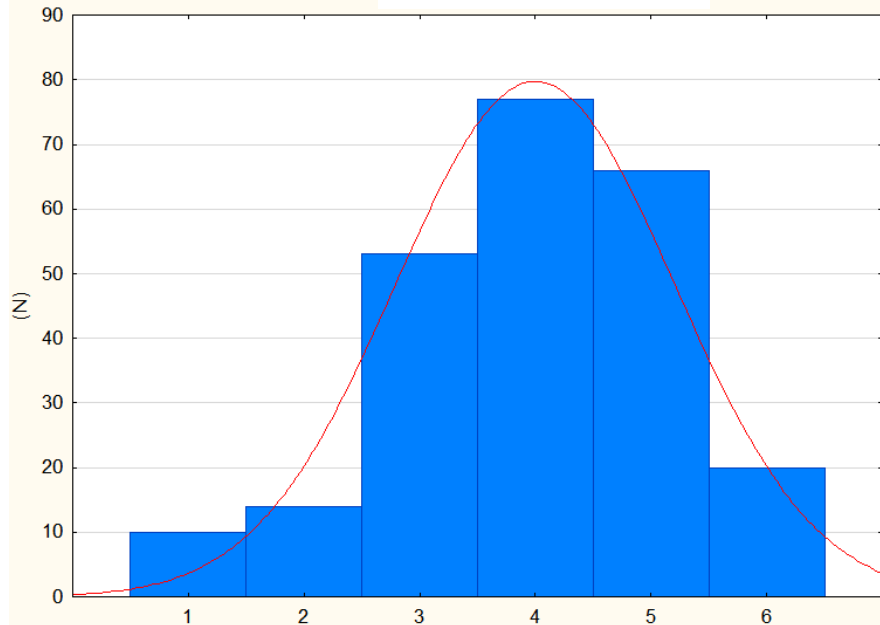
Część badawcza

1. Rodzaj odpadów do PSZOK odpisać:
(proszę wybrać jedną lub kilka odpowiedzi):
☐ Plastik
☐ Papier/makulatura
☐ Szkło
☐ Meble i inne odpady wielkogabarytowe
☐ Bioodpady
☐ Opony



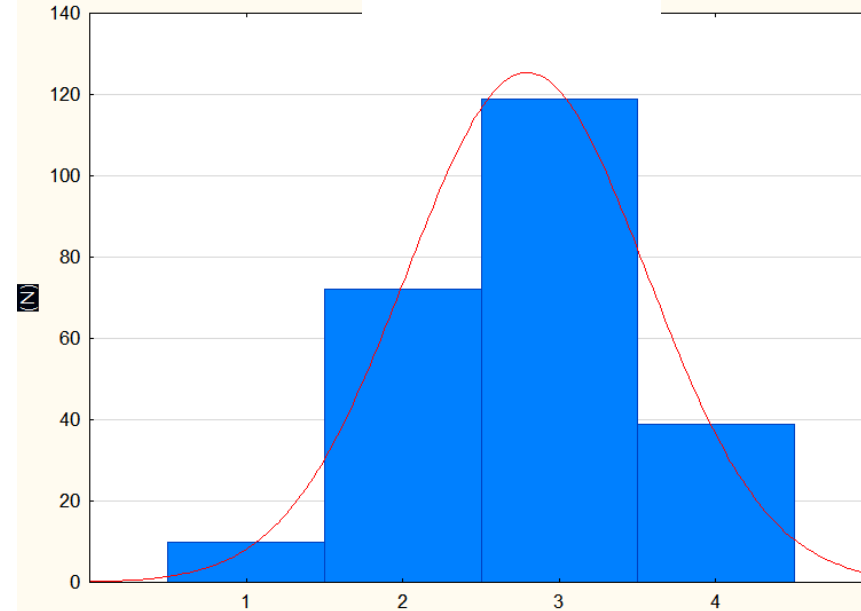
Profile of respondents in Chybie RCC

Age groups



- | | |
|----------|----------|
| 1. 18-24 | 4. 45-54 |
| 2. 25-34 | 5. 55-64 |
| 3. 35-44 | 6. >65 |

Education

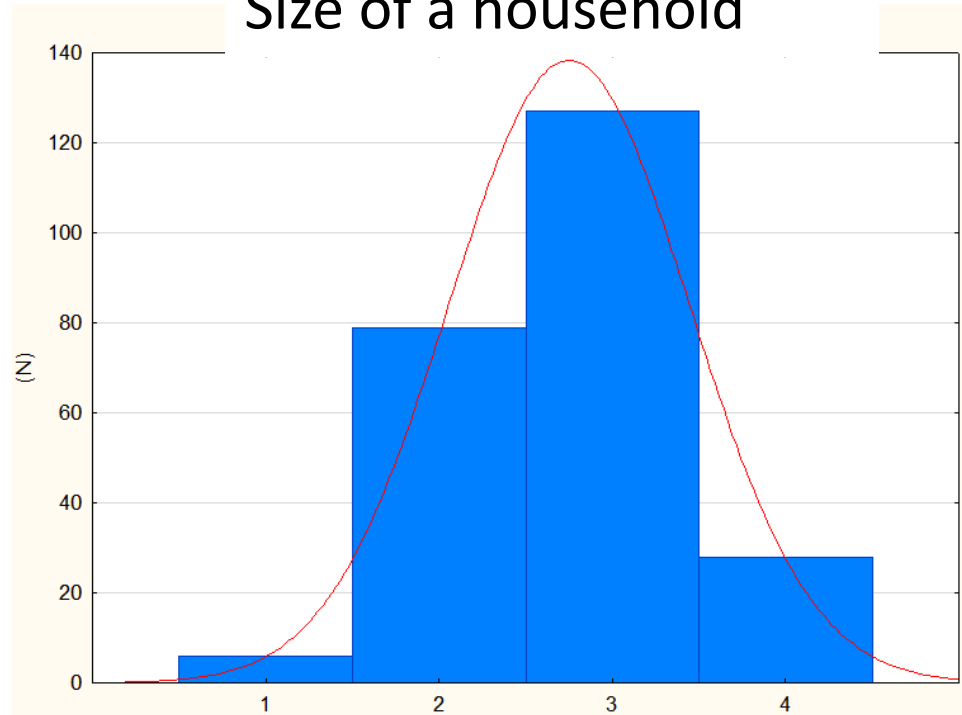


- | |
|-------------------------|
| 1. Primary education |
| 2. Vocational education |
| 3. Secondary education |
| 4. Higher education |

N=240

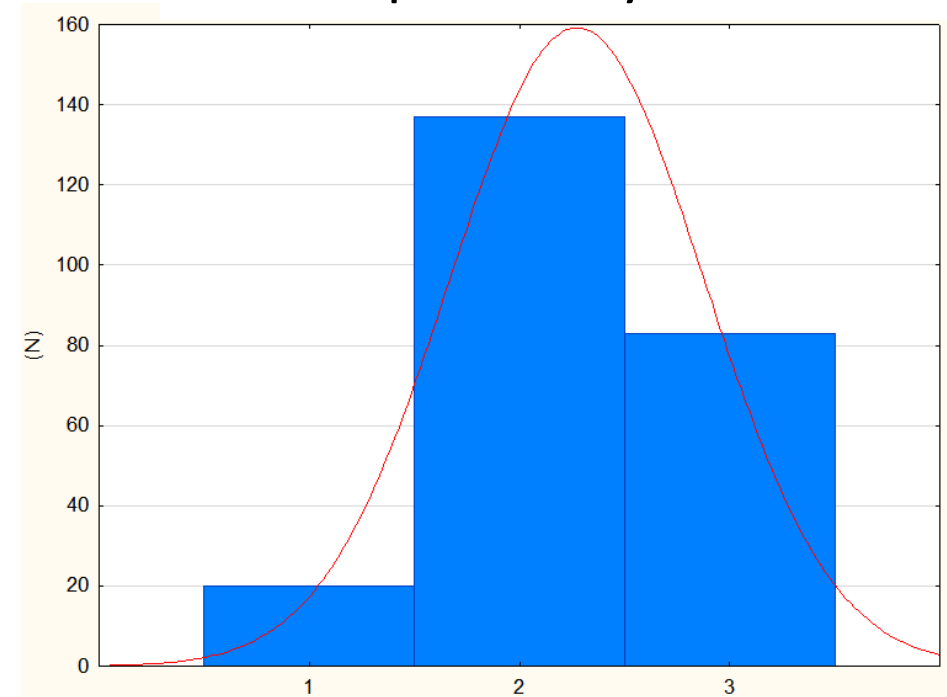
Profile of respondents in Chybie RCC

Size of a household



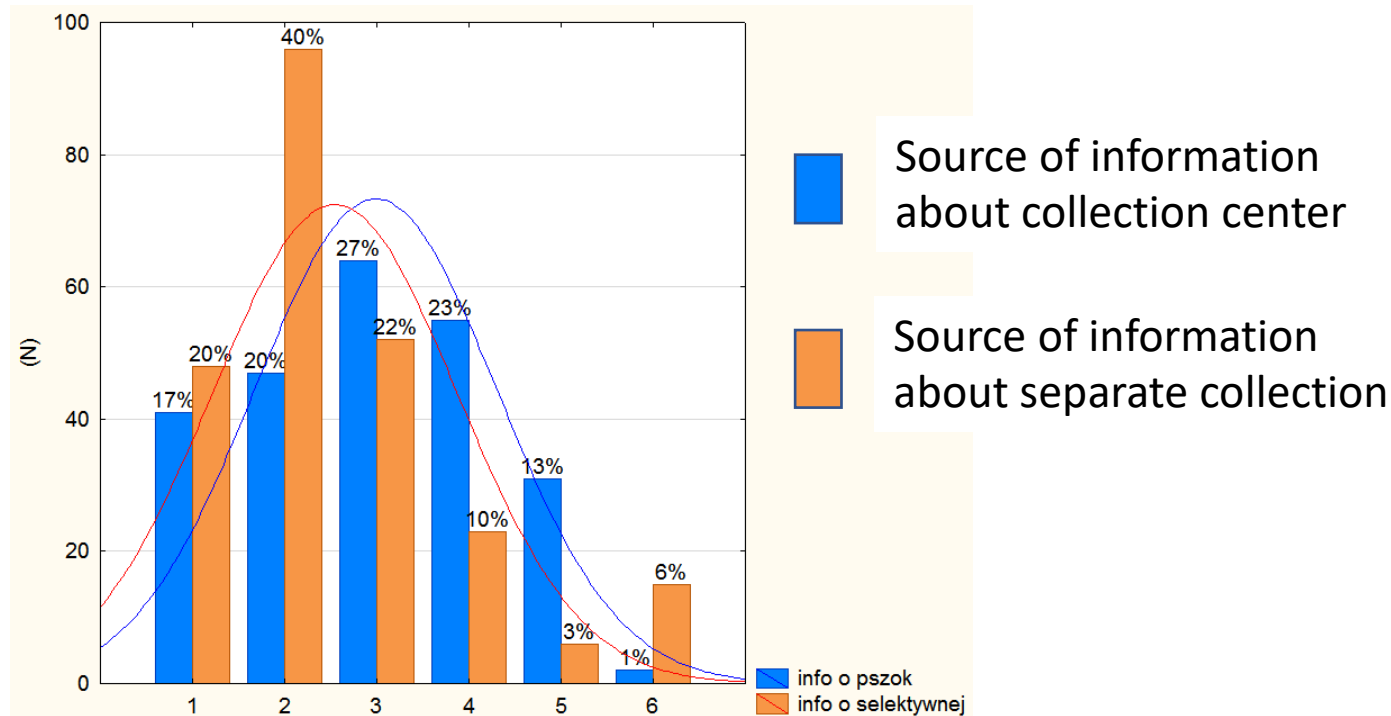
1. Single person family
2. Two persons family
3. Three-four persons family
4. Five and more persons family

Income per family member

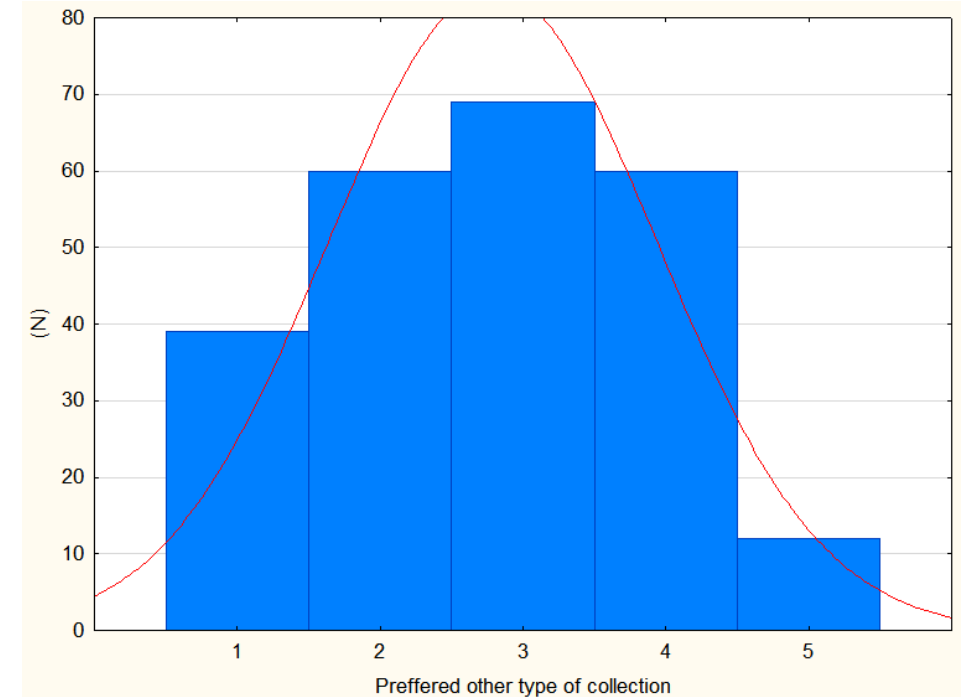


1. Low income
2. Middle income
3. High income

Results: Chybie RCC - source of information, possible improvement

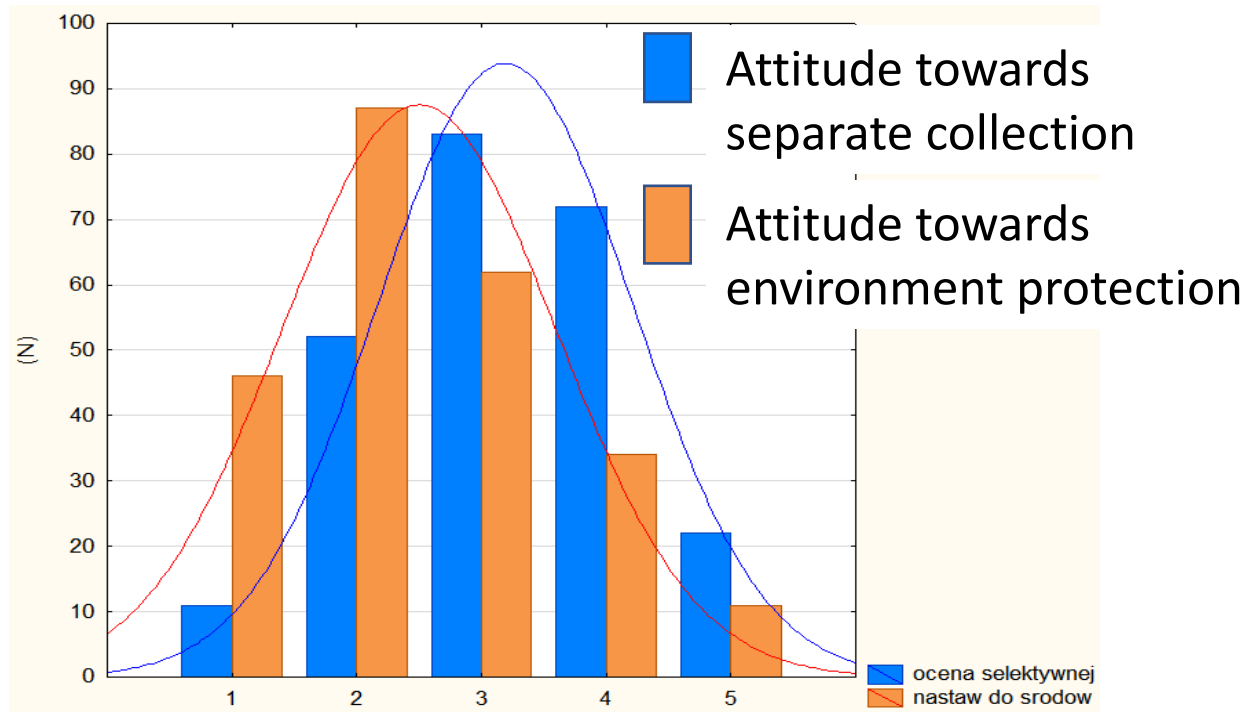


1. Website of a local government
2. Browser
3. Other residents
4. Social media
5. RTV/newspapers
6. Other source



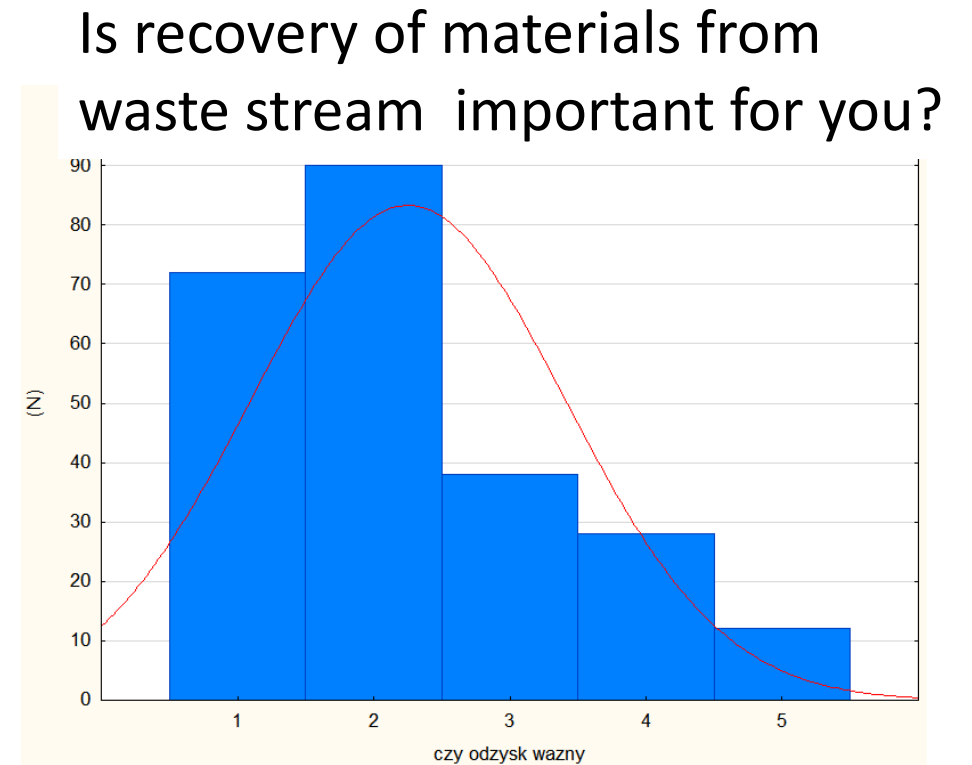
1. On-demand collection
2. Curbside collection
3. Containers in central location
4. According to schedule
5. No idea

Results: Chybie RCC: Attitude of individuals towards waste collection, environment and recovery of materials



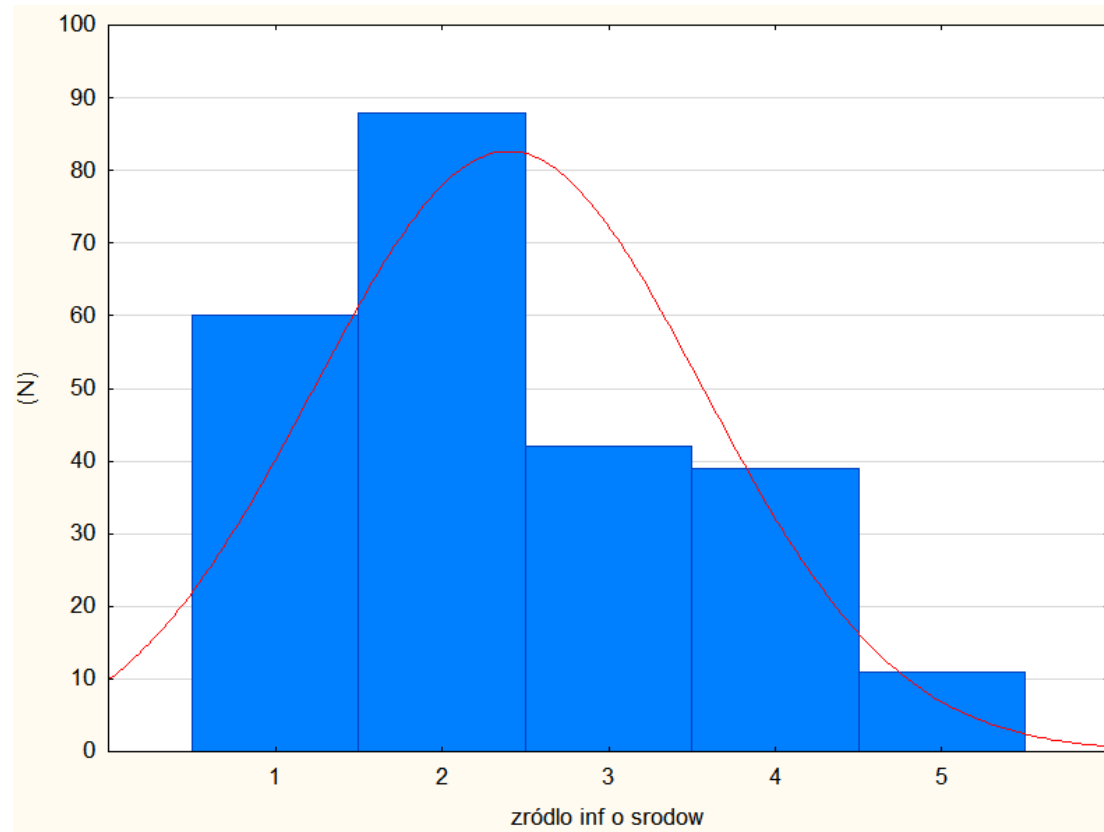
1. Strongly agree
2. Agree
3. Neutral

4. Disagree
5. Strongly disagree



Results - Chybie RCC

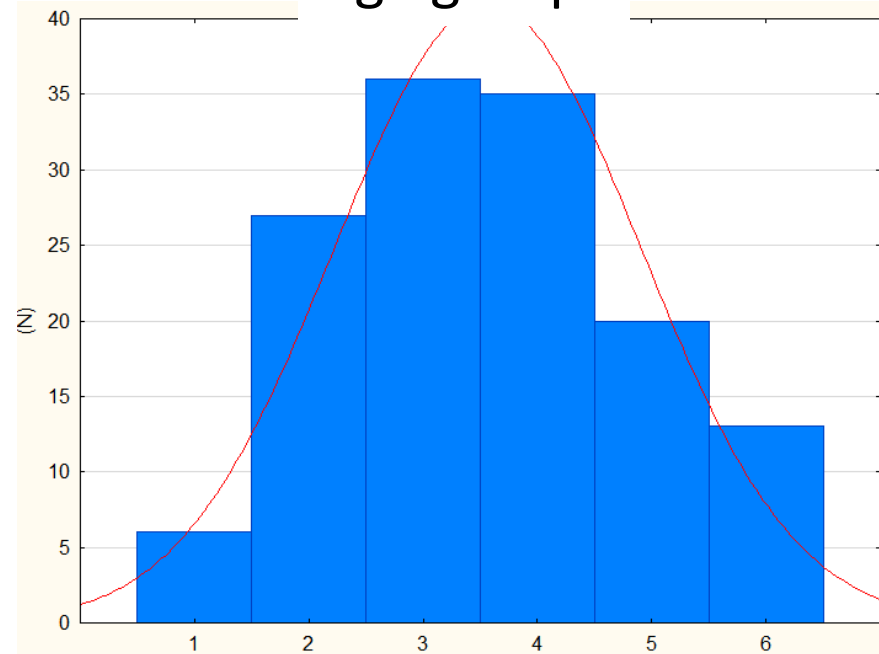
The main source of information about environmental protection



1. Education at school
2. Courses/workshops
3. Educational programmes
4. Internet, other media
5. Friends, relatives

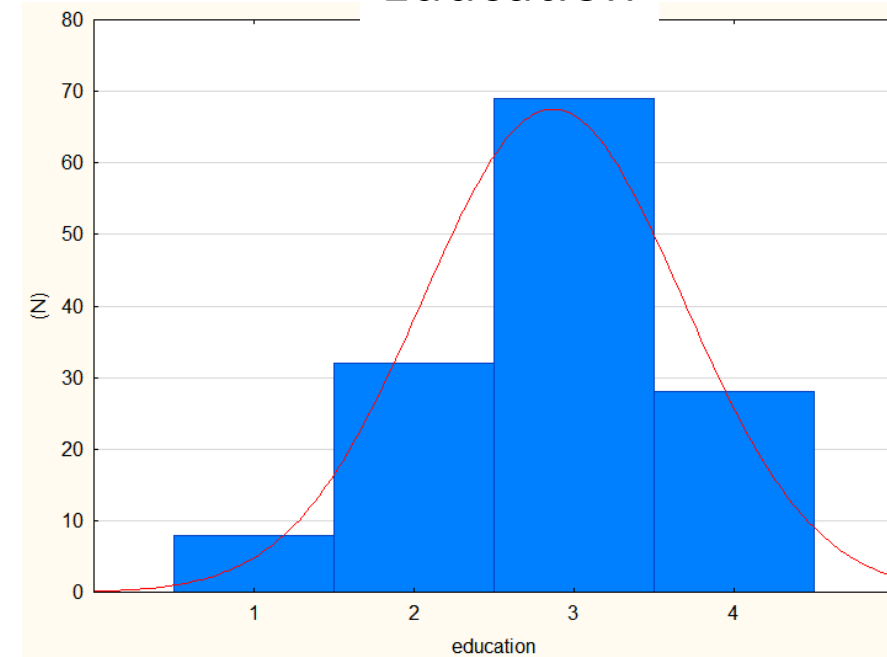
Profile of respondents in MCC Jastrzębie (rubble and renovation waste)

Age groups



- | | |
|----------|----------|
| 1. 18-24 | 4. 45-54 |
| 2. 25-34 | 5. 55-64 |
| 3. 35-44 | 6. >65 |

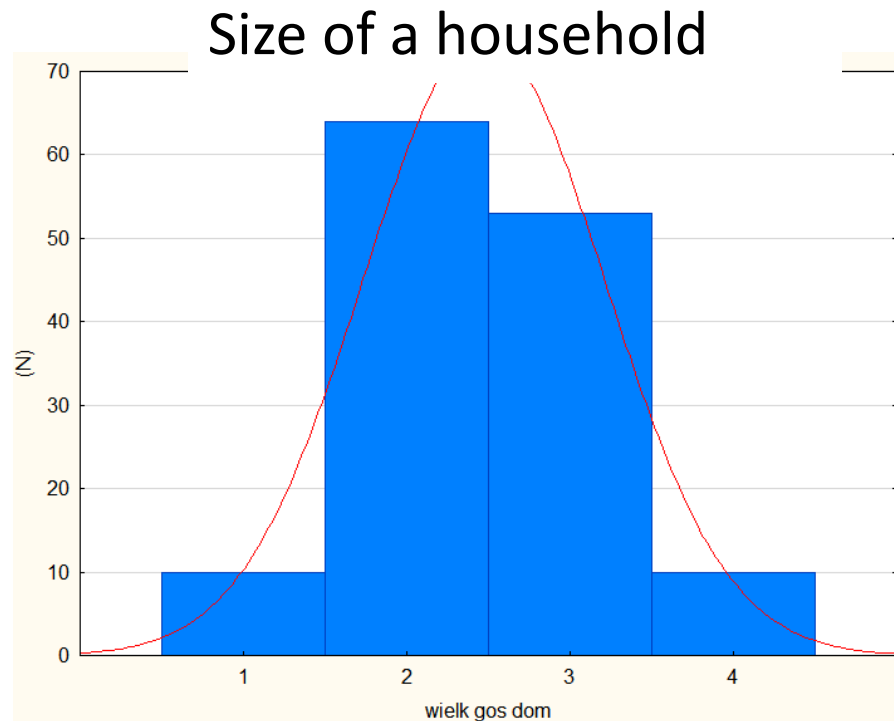
Education



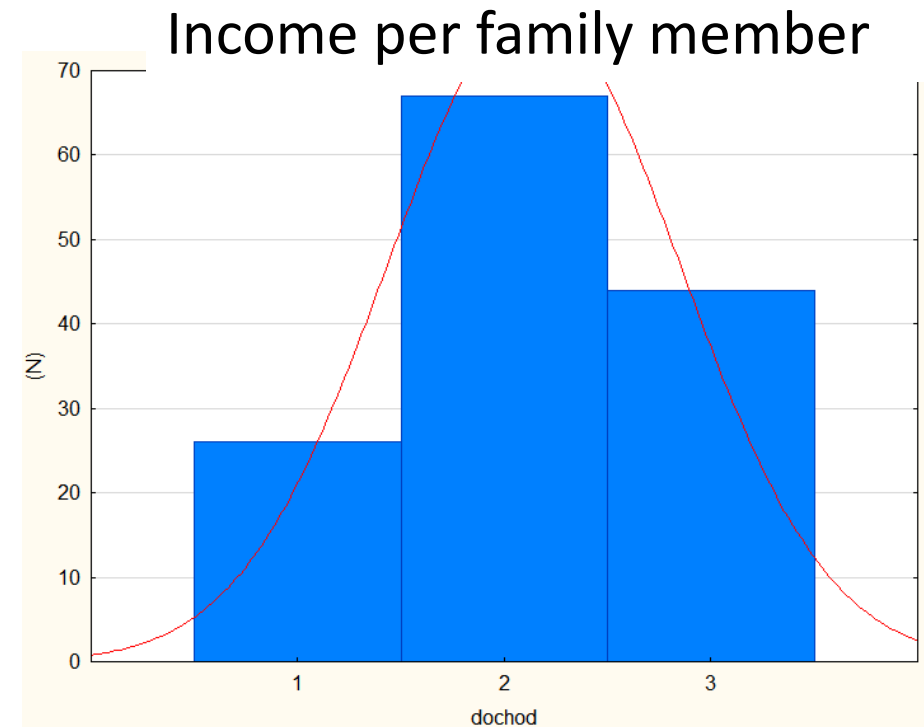
- | |
|-------------------------|
| 1. Primary education |
| 2. Vocational education |
| 3. Secondary education |
| 4. Higher education |

N=140

Profile of respondents in MCC Jastrzębie

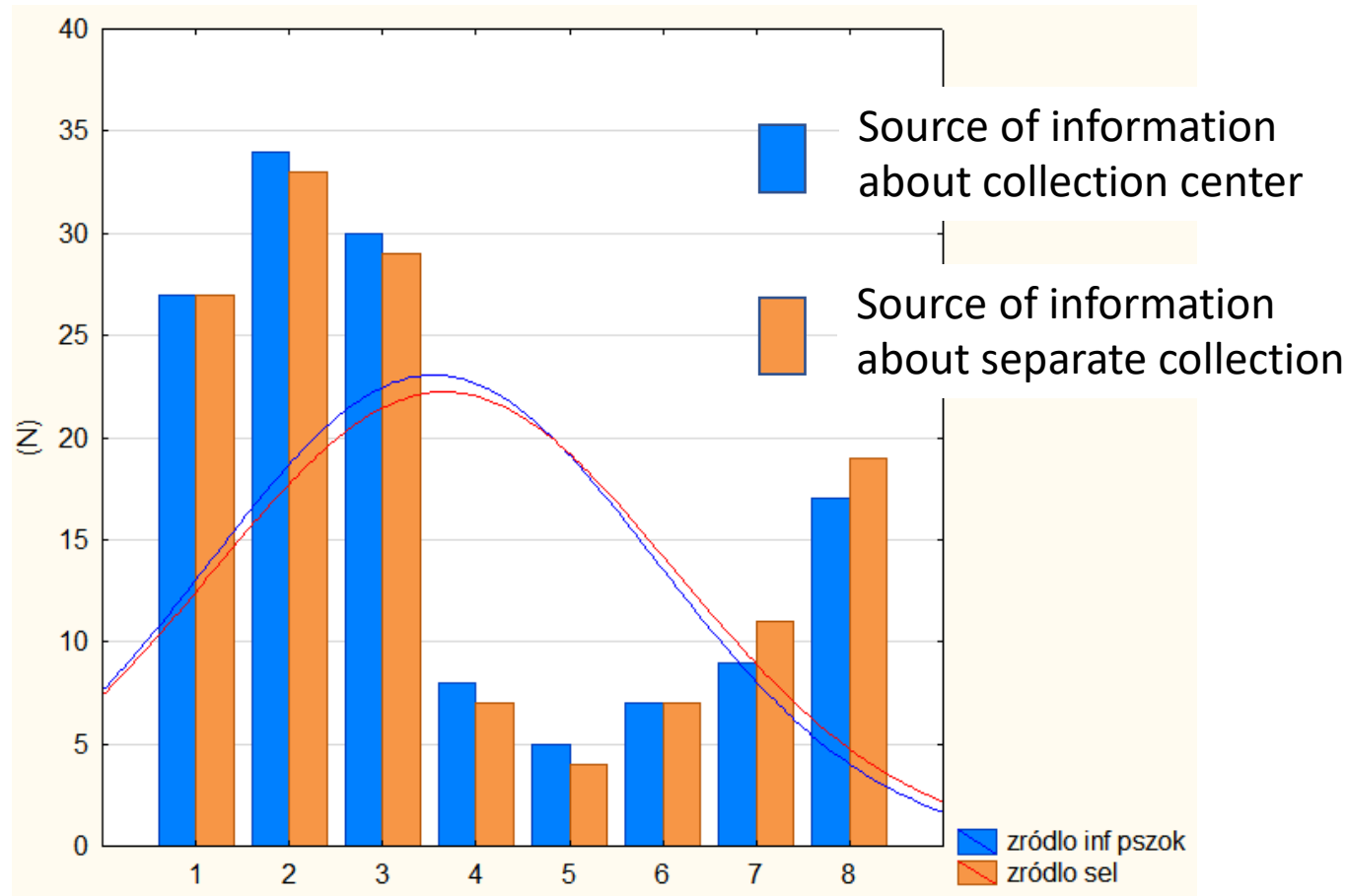


1. Single person family
2. Two persons family
3. Three/four persons family
4. Five and more persons family



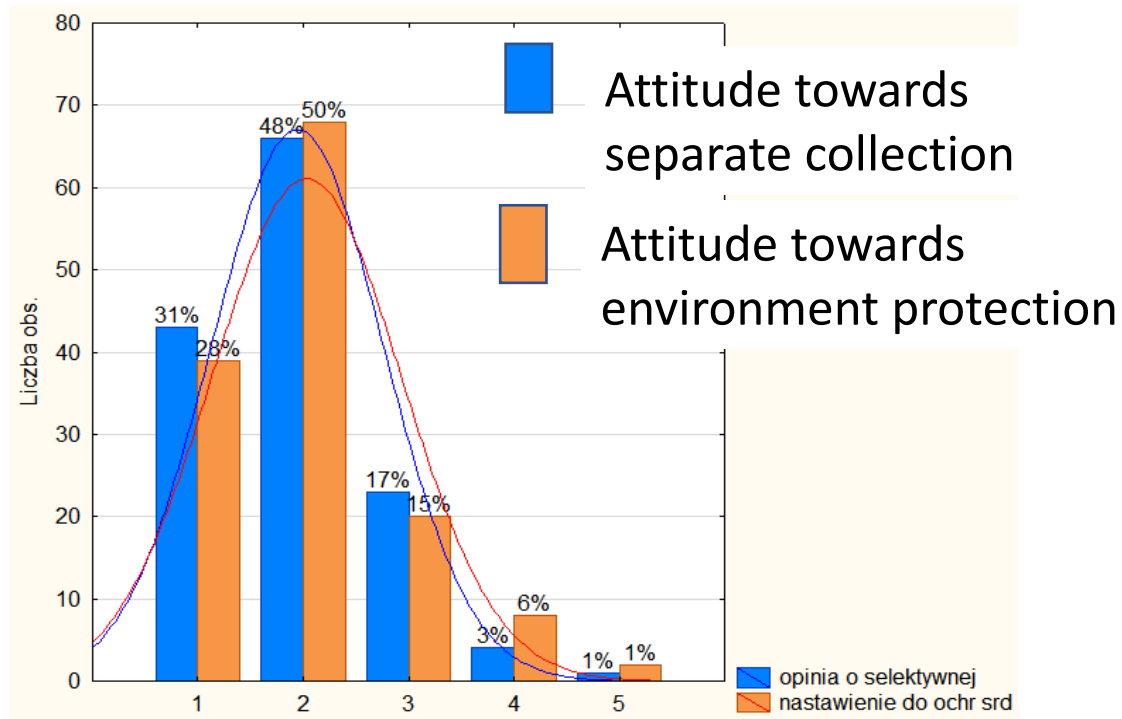
1. Low income
2. Middle income
3. High income

Results: Jastrzębie MCC source of information



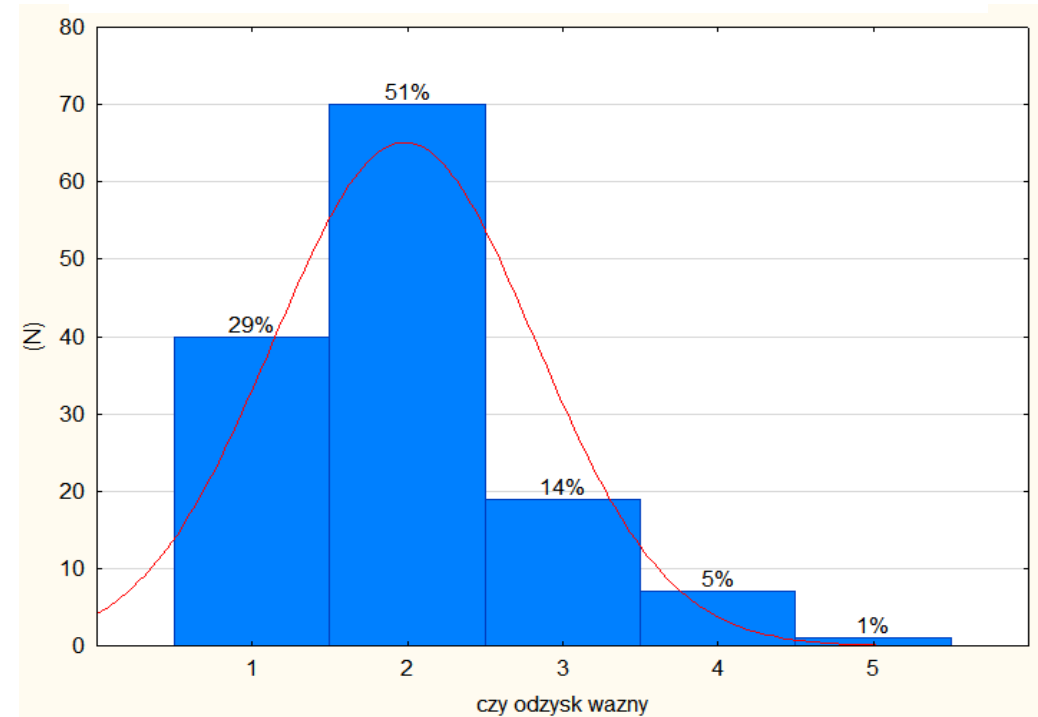
1. Website of a local government
2. Browser
3. Other residents
4. Social media
5. RTV/newspapers
6. Eco-schedule
7. Promotion leaflets
8. Other source

Results: Jastrzębie MCC - Attitude of individuals towards waste collection, environment and recovery of materials



1. Strongly agree
2. Agree
3. Neutral

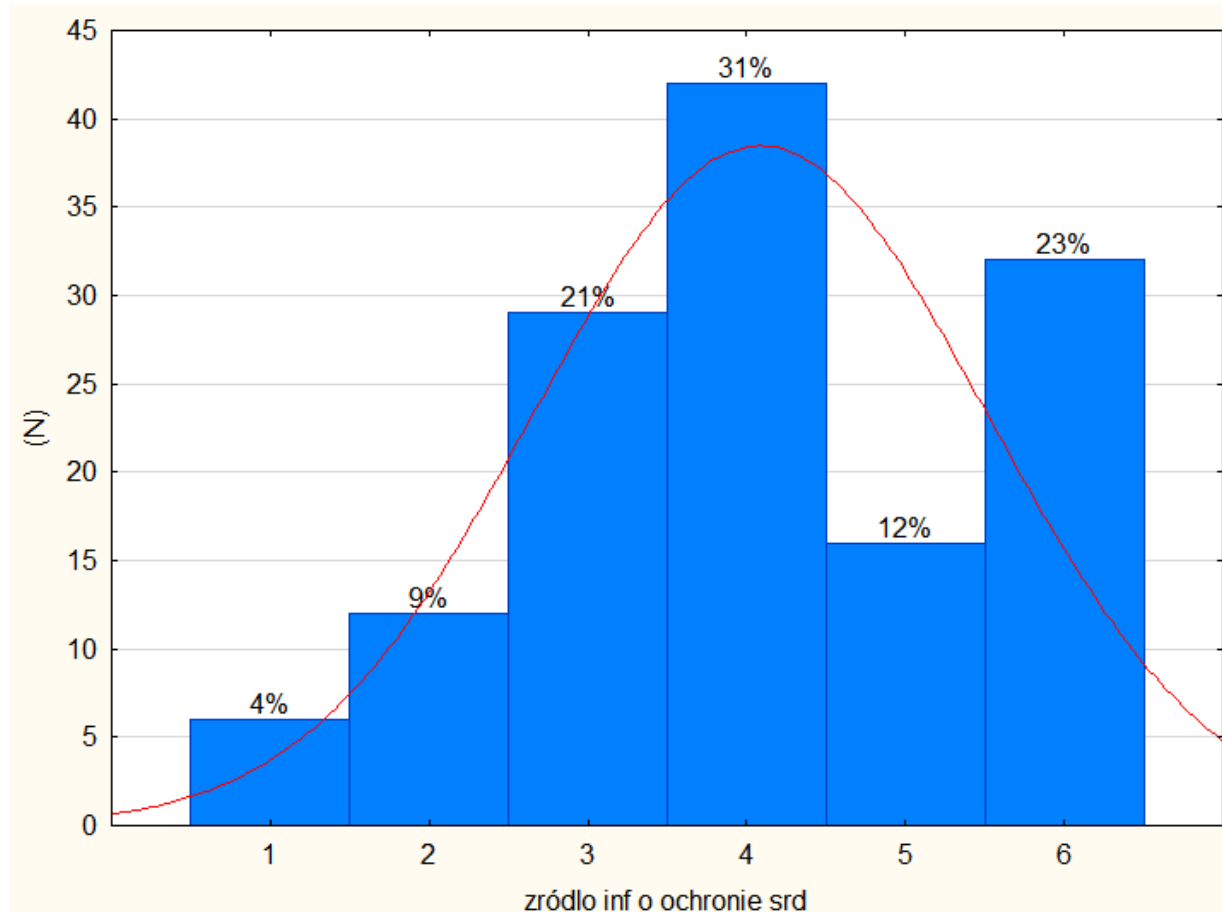
Is recovery of materials from waste stream important for you?



4. Disagree
5. Strongly disagree

Results - Jastrzębie MCC

The main source of information about environmental protection



1. Education at school
2. Courses/workshops
3. Educational programmes
4. Internet, other media
5. Friends, relatives
6. Educational campaigns and other events



Conclusions

- The main goals have been achieved and data for detailed analysis has been collected
- The results indicate high percentage of Internet sources for waste collection related information
- The attitude towards environment protection and separated waste collection is leaning towards high awareness by residents of importance of these activities
- The individuals propose some measures for improvement of the waste collection
- Deeper analysis will be provided in the article after the conference



Thank you for your attention

Σας ευχαριστώ για την προσοχή σας





Silesian
University
of Technology

10th INTERNATIONAL CONFERENCE ON SUSTAINABLE SOLID WASTE MANAGEMENT

21 - 24 June 2023, Chania, Crete, Greece

Towards sustainable community – the evaluation of the local municipal waste collection centers by residents – a case study of Poland

Piotr Nowakowski ¹, Mariusz WALA ²

¹ Faculty of Transport, Silesian University of Technology, Katowice, Poland

² PST Transgór S.A. Rybnik, Poland



Silesian University
of Technology

Piotr Nowakowski